

Applications

For use in pressurized large sized pipe systems with requirements for small reaction forces, providing high reliability and long life. These expansion joints are suitable for large extension in axial, lateral or angular directions and they are used particularly in cooling water systems at power plants, in condensers, in gas and drinking water supply lines for pumps, turbines and boilers. They compensate for thermal elongation, correct misalignment, isolate vibrations, dampen noise and absorb pressure surges.

Design

A customary manufactured rubber bellow with full-face rubber flanges.

Designed for working pressure 6–10 bar and vacuum 0.8–1.0 bar as standard. Other working pressure and/or vacuum rates on request. Integrated painted steel flanges as standard.

Building length 350/450 mm. Other lengths on request.

Teguflex® FFI
 Trelleborg FF Integrated flanges

Expansion Joints

DN 1100-DN 3800

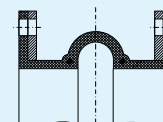
Materials

Colour Label	Inner tube	Outer cover	Max temp. °C	Applications
Red	EPDM	EPDM	90°	Hot water, cooling water with salt solutions, chlorine solutions, esters and ketones.
Yellow	Nitrile	Chloroprene	90°	Water, salt solutions, alkalis, mineral oils, vegetable or animal oils, aerosols, butane or propane gas, etc.
Green	Hypalon	Chloroprene	90°	Strong and/or concentrated acids, etc. Compressed air that bears oil aerosols.
White	Nitrile	Chloroprene	90°	Drinking water, food and beverages. Including fats and oils.

Note: Other materials available. Please ask.

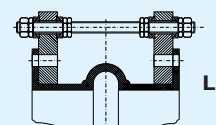
Pressure rating

Pressure	Temperature	PN6	PN10
Max. working pressure	70°C	6 bar	10 bar
	90°C	5 bar	8 bar
Test pressure	20°C	9 bar	15 bar
Burst pressure	20°C	>20 bar	>25 bar

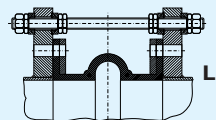


Type U

Standard unit for axial, lateral and angular movements.



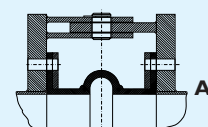
L1



L2

Type L

Unit with tie bars for lateral movements.



A2

Type A

Unit with hinges to take up angular movements in one plane.

Teguflex FFI DN 1100-DN 3800

Flange qualities

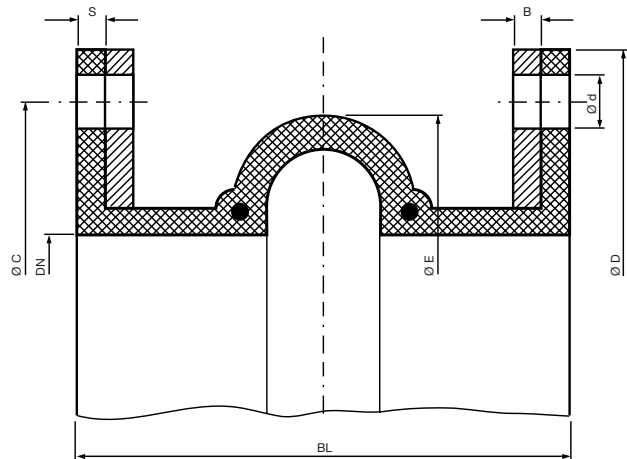
Painted steel flanges as standard.

Flange measurements

DN 1100-DN 3800 DIN 2501 PN 6/10

(see Flange dimension table for details)

Other flange standards available. Please ask!



Dimensions and movements

DN mm	BL mm	Eff.cross-sectional area Q(cm ²)	(E) mm	(S) mm	Permissible movements				Vacuum bar	Weight Incl. flange kg
					Comp- ression mm	Elong- ation mm	Lateral mm	Ang- ular		
1100	350	11700	1260	20	35	30	20	3°	0.9	187
1200	350	13700	1360	20	35	30	20	3°	0.9	210
1300	350	15800	1460	20	35	30	20	2.5°	0.9	245
1400	350	18000	1570	25	35	30	20	2.5°	0.9	275
1500	350	20600	1670	25	35	30	20	2°	0.8	302
1600	350	23200	1760	20	35	30	20	2°	0.8	367
1800	350	28400	1860	20	35	30	20	2°	0.8	424
2000	350	35300	2170	20	35	30	20	1.5°	0.8	495
2200	350	42250	2360	20	35	30	20	1.5°	0.8	585
2400	350	49850	2570	25	35	30	20	1.5°	0.8	714
2500	350	53900	2670	25	35	30	20	1°	0.8	800
2600	350	58000	2770	25	35	30	20	1°	0.8	830
2800	350	66900	2970	25	35	30	20	1°	0.8	872
3000	350	76400	3190	35	35	30	20	1°	0.8	960
3200	350	86500	3390	35	35	30	20	1°	0.8	1200
3400	450	97250	3590	35	35	30	20	0.8°	0.8	1800
3600	450	108600	3790	35	35	30	20	0.8°	0.8	1975
3800	450	120600	3990	35	35	30	20	0.8°	0.8	2150

Note: Maximum values do not apply simultaneously.
Other dimensions on request.

Optional equipment

Teflon lining (PTFE).



Trelleborg Industri AB, Expansion Joints, SE-231 81 Trelleborg, Sweden.
Street address: Henry Dunkers gata 2. Phone: +46 410 510 00. Fax: +46 410 131 93.
E-mail: expansion.joints@trelleborg.com Internet: www.trelleborg.com

Distributor: