

## Applications

Teguflex FP is suitable for a variety of applications, where aggressive chemicals (strong acids, aromatic solvents) or high temperature products (overheated water, steam) are involved.

Compensate for thermal elongation and misalignment.

Isolate vibrations, dampen noise and pressure surges, in connection with pipes, pumps, etc.

Teguflex FP do not propagate the flame (self extinguishable).

**Note:** Do not use neither low molecular weight ethers nor ketones applications.

## Design

Teguflex FP expansion joint is composed of a special internal fluor-elastomeric compound (VITON®), suitable for extremely tough applications and a unique fabric reinforcement, ensuring a long service life with remained properties.

Building length 130/150/200 mm.

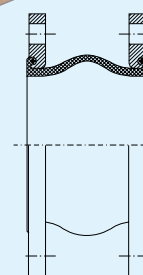
Turnable flanges.

# Teguflex® FP

Trelleborg TF BL 130-200

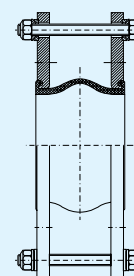
## Expansion Joints

DN 25-DN 600



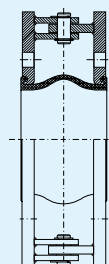
**Type U**

Standard unit for axial, lateral and angular movements.



**Type L**

Unit with tie bars for lateral movements.



**Type A**

Unit with hinges to take up angular movements in one plane

## Materials

Colour Label	Inner tube	Outer cover	Max temp. °C	Applications
Purple	Viton®	EPDM	90°	Highly aggressive chemicals (strong acids, aromatic solvents).
Double Purple	Viton®	Viton®	150°	Highly aggressive chemicals and/or high temperature.

## Pressure rating

Pressure	Temperature	DN 25 - DN 150	DN 200 - DN 300	DN 350 - DN 600
		Max. working pressure	90°C 150°C	10 bar 8 bar
Test pressure	20°C	16 bar	12 bar	12 bar
Burst pressure	20°C	>40 bar	>30 bar	>30 bar

# Teguflex FP BL 130-200 DN 25-DN 600

## Flange qualities

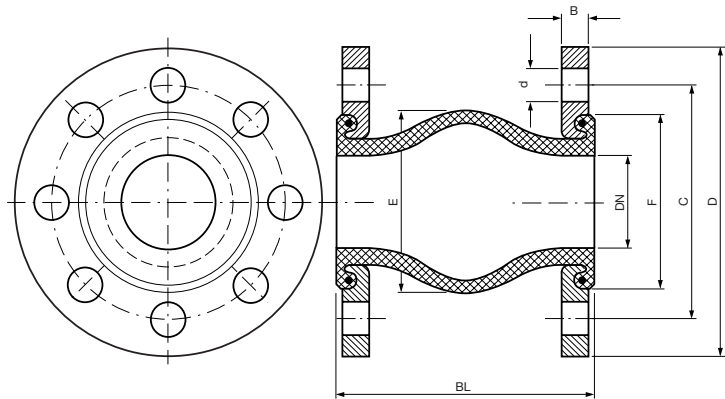
Zinc plated steel flanges are supplied as standard, however other types are available, stainless steel, hot dipped galvanized, etc., which can be obtained from stock.

## Flange measurements

DN32 – DN600 DIN 2501 PN 6/10/16

(see Flange dimension table for details)

Other flange standards also available. Please ask.



## Dimensions and movements

DN mm	BL mm	Eff.cross-sectional area Q(cm <sup>2</sup> )	(E) mm	(F) mm	Permissible movements				Max. vacuum		Weight
					Compression mm	Elongation mm	Lateral mm	Angular	W/o support ring bar	With support ring bar	Incl. flange kg
25/32	130/150	35	77	72	30	20	20	35°	0.8	1.0	3
40	130/150	45	85	80	30	20	20	35°	0.8	1.0	3
50	130/150	56	95	90	30	20	20	35°	0.7	1.0	4
65	130/150	79	110	105	30	20	20	30°	0.6	1.0	5
80	130/150	104	125	120	30	20	20	30°	0.5	1.0	6
100	130/150	136	145	140	30	20	20	25°	0.5	1.0	7
125	130/150	188	170	165	30	20	20	25°	0.4	1.0	8
150	130/150	254	195	190	30	20	20	15°	0.3	1.0	10
200	130/200	415	245	240	30	20	20	15°	0.3	1.0	15
250	130/200	615	295	290	30	20	20	10°	0.2	1.0	20
300	130/200	855	345	340	30	20	20	10°	0.2	1.0	24
350	130/200	1290	430	425	30	20	20	10°	0.2	1.0	32
400	200	1628	475	470	30	20	20	10°	0.2	1.0	45
450	200	2054	532	510	30	20	20	10°	0.2	1.0	52
500	200	2546	590	560	30	20	20	10°	0.2	1.0	63
600	200	3466	685	655	30	20	20	6°	0.2	1.0	95

Note: Maximum values do not apply simultaneously.

## Optional equipment

Vacuum rings, Flame guard etc. are available.

## Approvals (DN 25-DN 300)

Approvals available upon request.



Trelleborg Industri AB, Expansion Joints, SE-231 81 Trelleborg, Sweden.  
Street address: Henry Dunkers gata 2. Phone: +46 410 510 00. Fax: +46 410 131 93.  
E-mail: expansion.joints@trelleborg.com Internet: www.trelleborg.com