

Applications

For all types of industrial applications, residential houses, industrial plants, industrial premises as well as heating and sanitary applications.

Compensate for thermal elongation and misalignment.

Isolate vibrations, dampen noise and pressure surges in connection with engines, pumps, turbines etc.

Design

A moulded rubber bellows that combines elastic properties of rubber with various types of reinforcement to provide a flexible pipe joint that is easy to install providing good performance and a long service life.

Building length 150/200/275/300 mm.

Turnable flanges.

Teguflex® W

Trelleborg TF BL 150-300

Expansion Joints

DN 25-DN 1000



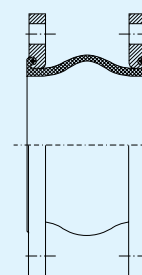
Materials

Colour Label	Inner tube	Outer cover	Max temp. °C	Applications
Red	EPDM	EPDM	90°	Hot water, cooling water with salt solutions, chlorine solutions, esters and ketones.
Yellow	Nitrile	Chloroprene	90°	Water, salt solutions, alkalis, mineral oils, vegetable or animal oils, oils aerosols, butane or propane gas, etc.
White	Nitrile white	Chloroprene	90°	Drinking water, food and beverages. Including fats and oils.
Green	Hypalon	Chloroprene	90°	Strong and/or concentrated acids, etc. Compressed air that bears oil aerosols.

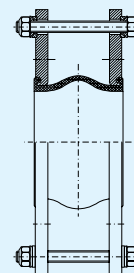
Note: Other materials available. Please ask.

Pressure rating

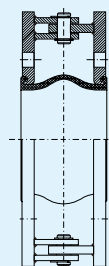
Condition	Temperature	Pressure DN 25-300	Pressure DN 350-1000
Max. working pressure	70°C	16 bar	10 bar
	90°C	10 bar	8 bar
Test pressure	20°C	25 bar	13 bar
Burst pressure	20°C	>50 bar	>30 bar



Type U
Standard unit for axial, lateral and angular movements.



Type L
Unit with tie bars for lateral movements.



Type A
Unit with hinges to take up angular movements in one plane.

Teguflex W BL 150-300 DN 25-DN 1000

Flange qualities

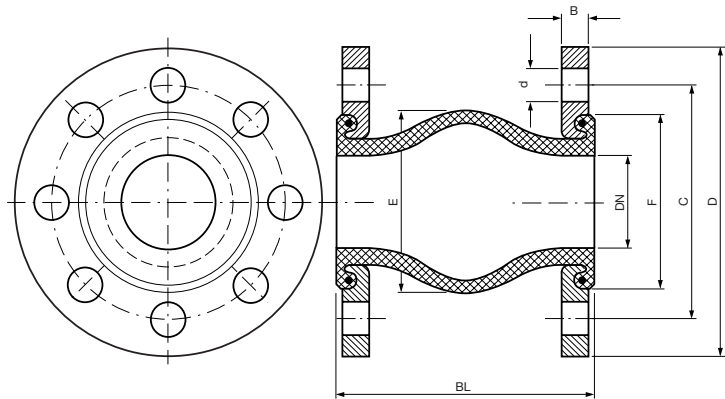
Zinc plated steel flanges. Other types of qualities, stainless steel, hot galvanised, etc. available from stock.

Flange measurements

DN 32-DN 1000 DIN 2501 PN 6/10/16

(see Flange dimension table for details)

Other flange standards available. Please ask.



Dimensions and movements

DN mm	BL mm	Eff. cross-sectional area Q(cm ²)	(E) mm	(F) mm	Permissible movements				Max. vacuum		Weight
					Comp- ression mm	Elong- ation mm	Lateral mm	Ang- ular	W/o support ring bar	With support ring bar	Incl. flange kg
32	150	24	70	65	30	20	20	35°	0.8	1.0	3
40	150	45	94	78	30	20	20	35°	0.8	1.0	3
50	150	46	97	90	30	20	20	35°	0.8	1.0	4
65	150	82	120	108	30	20	20	30°	0.8	1.0	5
80	150	110	136	124	30	20	20	30°	0.5	1.0	6
100	150	163	162	152	30	20	20	25°	0.5	1.0	7
125	150	228	188	183	30	20	20	25°	0.5	1.0	8
150	150	321	220	214	30	20	20	15°	0.5	1.0	10
200	200	549	282	270	30	20	20	15°	0.3	1.0	15
250	200	766	330	318	30	20	20	10°	0.3	1.0	20
300	200	975	370	370	30	20	20	10°	0.3	1.0	24
350	200	1290	430	425	30	20	20	10°	0.3	1.0	32
400	200	1628	475	470	30	20	20	10°	0.3	1.0	45
450	200	2054	532	510	30	20	20	10°	0.3	1.0	52
500	200	2546	590	560	30	20	20	10°	0.3	1.0	63
600	200	3466	685	655	30	20	20	6°	0.3	1.0	95
700	275	4500	820	778	40	25	30	5°	0.3	1.0	125
800	275	5600	920	878	40	25	30	4°	0.2	1.0	160
900	300	7000	1060	988	40	25	30	4°	0.2	1.0	175
1000	300	8500	1160	1088	40	25	30	3°	0.1	1.0	210

Note: Maximum values do not apply simultaneously.

Optional equipment

Teflon lining (PTFE), Vacuum rings (stainless steel or Teflon), Flame guard, etc. are available.



Trelleborg Industri AB, Expansion Joints, SE-231 81 Trelleborg, Sweden.
Street address: Henry Dunkers gata 2. Phone: +46 410 510 00. Fax: +46 410 131 93.
E-mail: expansion.joints@trelleborg.com Internet: www.trelleborg.com

Distributor: